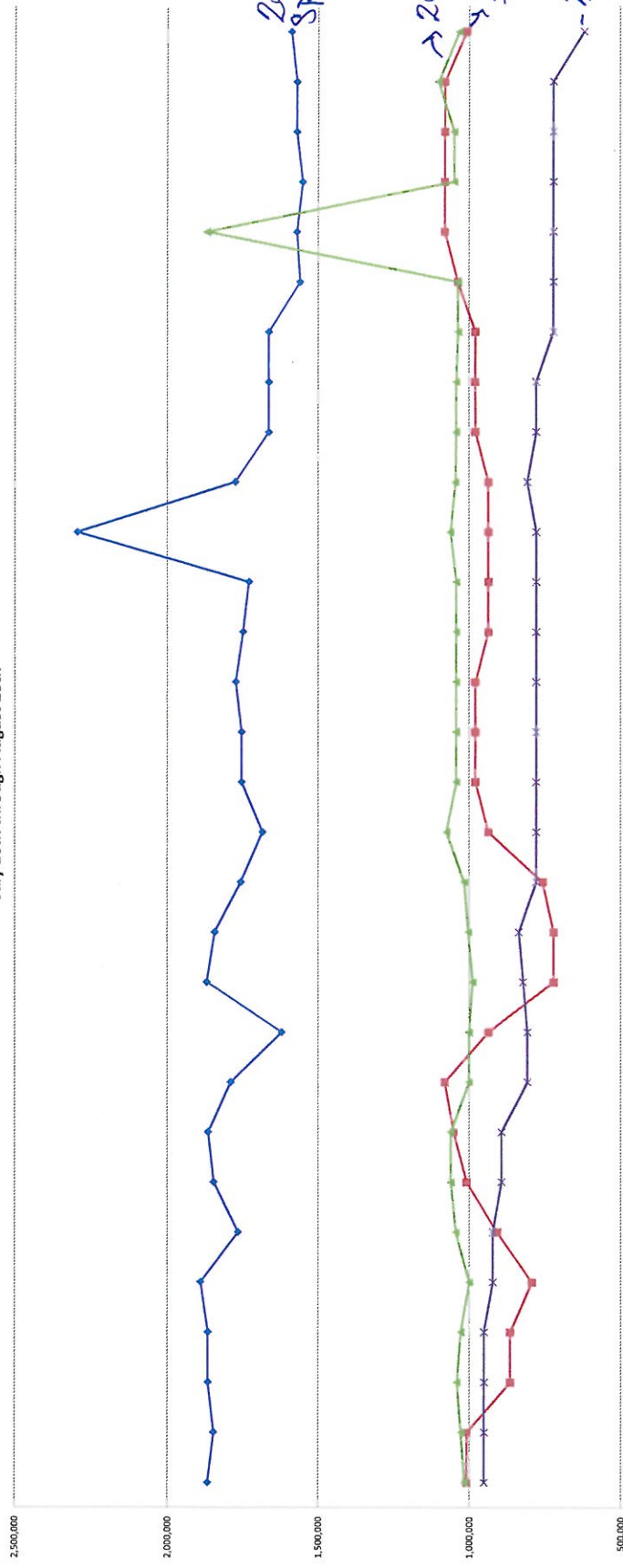


Spring Flows, Reservoir Water and Treatment Plant Usage
2017 and 2018 Comparison
July 28th through August 26th



	1	2	3	4	5	6	7	8	9	10	11	12	13	14	15	16	17	18	19	20	21	22	23	24	25	26	27	28	29	30
2017 Total Spring Flows	1,867,542	1,848,154	1,865,722	1,865,722	1,890,662	1,766,742	1,848,154	1,865,503	1,790,898	1,621,048	1,870,364	1,844,513	1,757,222	1,685,616	1,754,726	1,784,726	1,741,115	1,750,203	1,740,915	2,293,171	1,761,554	1,684,248	1,684,248	1,684,248	1,560,280	1,571,167	1,571,167	1,571,167	1,589,645	
2017 TX Plant	1,008,000	1,008,000	864,000	864,000	792,000	907,200	1,008,000	1,008,000	1,080,000	936,000	720,000	700,000	756,000	936,000	936,000	979,200	979,200	936,000	936,000	936,000	936,000	979,200	979,200	979,200	979,200	1,036,800	1,080,000	1,080,000	1,080,000	1,008,000
2018 Spring and Res. Flows	1,015,027	1,027,853	1,040,876	1,027,853	999,153	1,044,390	1,060,831	1,050,831	1,000,382	1,090,202	988,831	1,037,311	1,016,271	1,074,885	1,042,572	1,042,572	1,042,572	1,042,572	1,042,572	1,061,360	1,045,571	1,042,572	1,042,572	1,042,572	1,036,673	1,870,364	1,048,956	1,048,956	1,048,956	1,032,814
2018 TX Plant	950,000	950,000	950,000	950,000	921,600	921,600	892,800	892,800	895,400	865,400	820,800	825,200	777,600	777,600	777,600	777,600	777,600	777,600	777,600	777,600	806,400	777,600	777,600	777,600	720,000	720,000	720,000	720,000	720,000	619,700

Reservoir Water is being used to supplement treatment plant usage beginning in June 2018